

Quick Start Guide

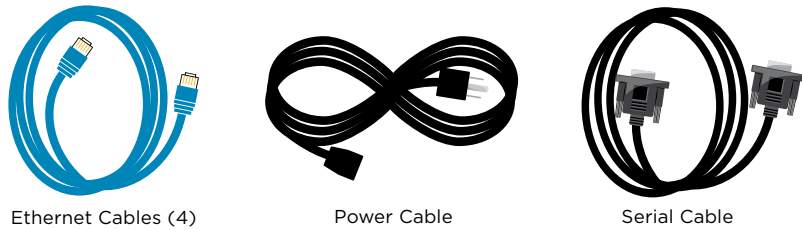
Forcepoint V5000

Web or Email Protection Appliance

⚠ Before you begin...

Plan your deployment before setting up the appliance. See the back of this guide for a deployment overview and reference sheet.

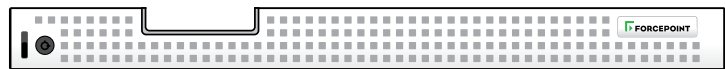
1 Verify Contents



Ethernet Cables (4)

Power Cable

Serial Cable



Bezel (faceplate)

Contact Forcepoint Technical Support if any items are missing.

2 Rack Installation

To rack the V5000 appliance, use a rack tray (not included).

1. Obtain a rack tray and install into desired server rack.



2. Place appliance on tray and secure to server rack using mounting screws on front of appliance.



3 Determine Security Mode

The appliance supports the following security modes:

- **Web** (Web Filter & Security or TRITON AP-WEB)
- **Email** (TRITON AP-EMAIL)

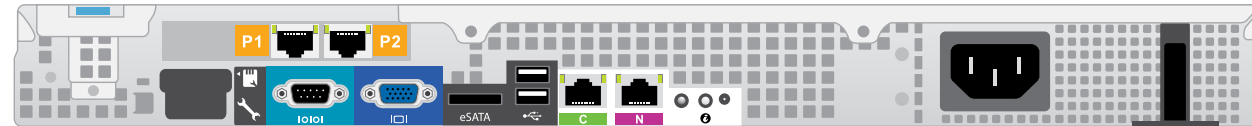
Based on your subscription and deployment plan, determine the appropriate security mode for this appliance.

4 Connect Network Cables

Connect the appliance interfaces required by the security mode for this appliance. *Cat 5E cables (or better) are required. Do not use crossover network cables.*

	Web	Email
Required Ports:	C P1* N	C P1
Optional Ports:	P2*	P2

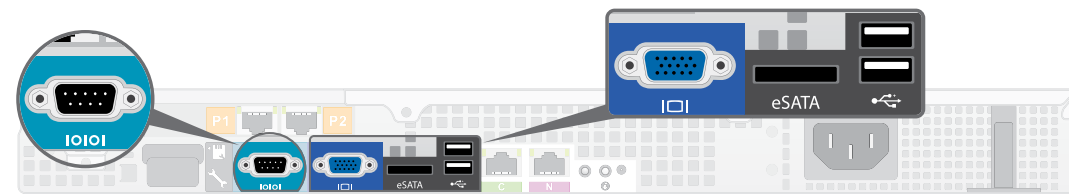
*Not used for Web Filter & Security.



Interface	Function
C	<ul style="list-style-type: none"> • Provides communication with other TRITON components, including TRITON Manager. • Handles database downloads from Internet.
P1 P2	<p>Web mode:</p> <ul style="list-style-type: none"> • Enables Content Gateway proxy to receive Internet requests and communicate with web servers. <p>Email mode:</p> <ul style="list-style-type: none"> • Enables TRITON AP-EMAIL to receive and send mail. • Provides personal email management and cluster communication. • Requires access to mail server.
N	<ul style="list-style-type: none"> • Allows Network Agent to monitor Internet requests. • Connect to switch port. If sending blocking information through N, connect to bidirectional span, monitor, or mirror port on switch.

5 Connect Input Device & Power On

Serial Port Connection OR Keyboard/Monitor Connection



Connect a computer to serial port using null modem cable (provided). Or, connect a terminal server to serial port using a straight-through cable (not provided). *Serial port settings are: 9600 baud, 8 bits, no parity.*

Connect a monitor and keyboard to appliance, either directly or through a KVM (keyboard/video/mouse) switch.

6 Power On Appliance

Power on the appliance and check the following indicators:

Front

- Power button is illuminated.

Rear

- LEDs for connected interfaces (NICs) are green.
- System status indicator (LED left of power supplies) is solid blue.

Contact Forcepoint Technical Support if any indicators are not illuminated correctly.

7 Configuration Overview

Please refer to the **TRITON Appliances Getting Started** guide for more details.

Initial Configuration

Firstboot Script

- Configure security mode.
- Configure Appliance Controller interface (C).
- Configure NTP servers/system time.

Appliance Command Line

- Configure applicable network interfaces.
- Configure other settings as desired.

Web Mode

TRITON Manager

- Enter subscription key, update Master Database, configure Network Agent, and configure policies in TRITON Manager.
- Requires Windows Server 2008 R2 or Windows Server 2012 or 2012 R2.

Content Gateway Manager (proxy)

- If your site uses the Forcepoint proxy, configure user authentication and select protocols.

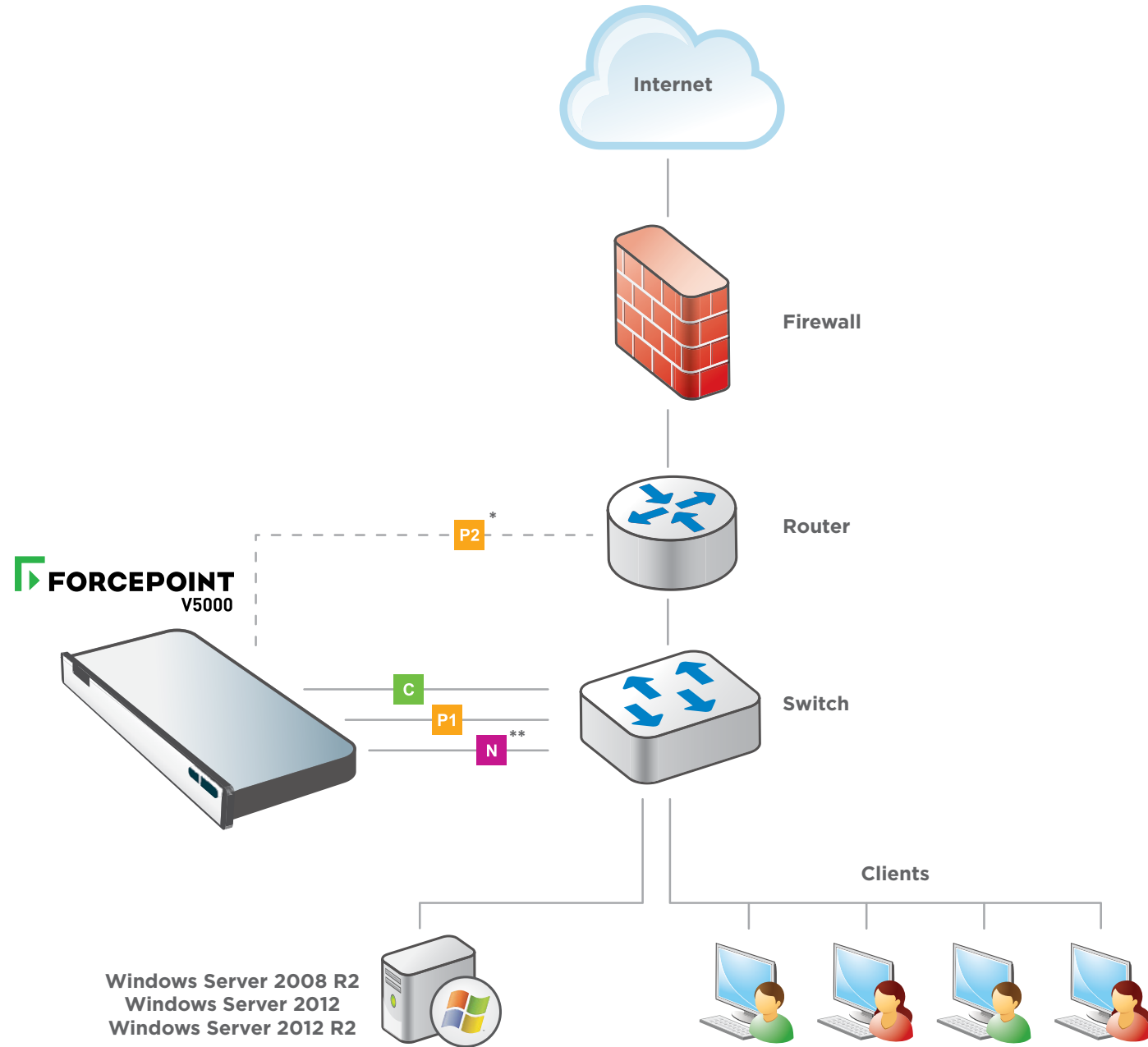
Email Mode

TRITON Manager

- Complete configuration wizard, enter subscription key, and configure policies in the Email module. Configure email DLP policies in the Data module.
- Requires Windows Server 2008 R2 or Windows Server 2012 or 2012 R2.

Appliance Deployment Overview

You can deploy one or more appliances on your network. The diagram below illustrates a basic appliance deployment. A separate computer with Windows Server 2008 R2 or Windows Server 2012 or 2012 R2 is required for running TRITON Manager. See the **TRITON Appliances Getting Started** guide for details.



* P2 is optional and may be connected to a router or switch.

** Connect the N interface to a bidirectional span, monitor, or mirror port on the switch.

Support & Resources

Getting Started Guide

support.forcepoint.com/documentation

Online Support and Contact Information

support.forcepoint.com/

Deployment Reference Sheet

Appliance Information

C Interface IP:

Hostname:

admin is the default user name for the Appliance CLI, TRITON Manager, and Content Gateway Manager.

Network Configuration

Appliance Controller Interface (C)

IP Address:

Primary DNS:

Subnet Mask:

Secondary DNS:

Default Gateway:

Tertiary DNS:

Content Gateway / TRITON AP-EMAIL Interfaces (P1 & P2)

P1

IP Address:

Default Gateway:

Subnet Mask:

Primary DNS:

P2

IP Address:

Secondary DNS:

Subnet Mask:

Tertiary DNS:

Above settings apply to P1 and P2

Network Agent Interface (N)

IP Address:

Primary DNS:

Subnet Mask:

Secondary DNS:

Default Gateway:

Tertiary DNS:

TRITON Manager

Web

Policy Server IP:

Log Server IP:

Subscription Key:

Email

Log Server IP:

Authentication Mode:

SQL Server

IP Address:

User Name:

Password:

See the **TRITON Appliances Getting Started** guide for details.