

# Quick Start Guide

## Forcepoint V10000 G4

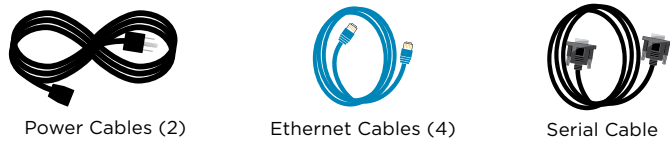
### Web or Email Security Appliance

## ⚠ Before you begin...

Plan your deployment before setting up the appliance. See the back of this guide for a deployment overview and reference sheet.

## 1 Verify Contents

### 1 Accessory Kit

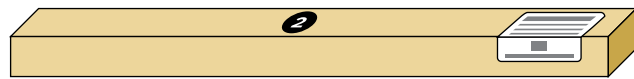


Power Cables (2) Ethernet Cables (4) Serial Cable



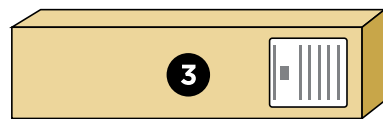
Bezel (faceplate)

### 2 Sliding Ready Rail Kit



- Left Ready Rail
- Right Ready Rail
- Velcro Straps (2)
- Rack Installation Instructions

### 3 Cable Management Arm Kit



- Cable Management Arm
- Cable Tie Wraps
- Static Support Tray
- CMA Installation Instructions

Optional 10GbE NIC Expansion Kit available. Contact your Forcepoint account representative.

Contact Forcepoint Technical Support if any items are missing.

## 2 Rack Appliance



See the **Rack Installation Instructions** included in the Sliding Ready Rail kit.

## 3 Determine Security Mode

The appliance supports the following security modes:

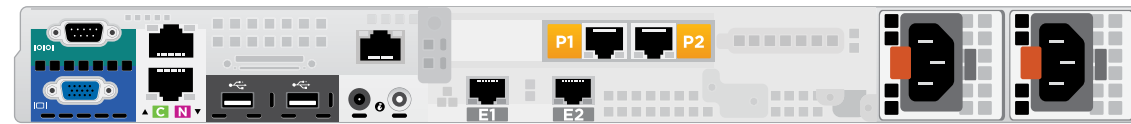
- **Web** (Forcepoint Web Security)
- **Email** (Forcepoint Email Security)

Based on your subscription and deployment plan, determine the appropriate security mode for this appliance.

## 4 Connect Network Cables

If you have a 10GbE optical NIC, connect appropriate fiber optic cables. Otherwise, Cat 5E cables (or better) are required. Do not use crossover network cables.

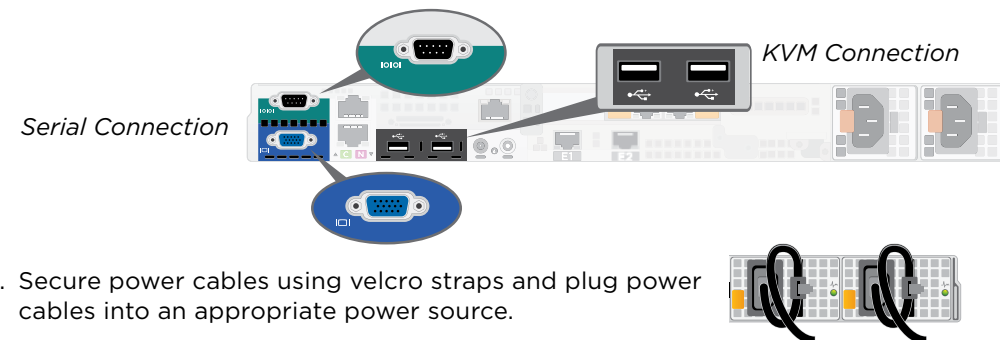
	Web	Email
Required Ports:	C P1 N	C E1
Optional Ports:	P2 E1 E2	E2 P1 P2



Interface	Function
C	<ul style="list-style-type: none"> <li>• Provides communication with other Forcepoint components, including Forcepoint Security Manager.</li> <li>• Handles database downloads from the Internet.</li> <li>• Provides access to the Content Gateway Manager.</li> </ul>
P1 P2	<ul style="list-style-type: none"> <li>• Enables Content Gateway proxy to receive Internet requests and communicate with Web servers.</li> <li>• Optionally bonded to E1/E2 in Email mode.</li> </ul>
N	<ul style="list-style-type: none"> <li>• Allows Network Agent to monitor Internet requests.</li> <li>• Connect to switch port. If sending blocking information through N, connect to bidirectional span, monitor, or mirror port on switch.</li> </ul>
E1 E2	<ul style="list-style-type: none"> <li>• Enables Forcepoint Email Security to receive and send mail.</li> <li>• Provides personal email management and cluster communication.</li> <li>• Requires access to mail server.</li> <li>• Optionally bonded to P1/P2 in Web mode.</li> </ul>

## 5 Connect Input Device

1. Connect to the appliance via serial port or KVM in order to access the command line interface for initial configuration. *Serial port settings are: 9600 baud, 8 bits, no parity.*



2. Secure power cables using velcro straps and plug power cables into an appropriate power source.

## 6 Power On Appliance

Power on the appliance and check the following indicators:

### Front

- Power button is illuminated.
- Hard drive LEDs are green.

### Rear

- Power supply LEDs are green.
- LEDs for connected interfaces (NICs) are green.
- System status indicator (LED left of power supplies) is solid blue.

Contact Forcepoint Technical Support if any indicators are not illuminated correctly.

## 7 Configuration Overview

Please refer to the **Forcepoint Appliances Getting Started** guide for more details.

### Initial Configuration

#### Firstboot Script

- Configure security mode.
- Configure the appliance management communication interface (C).
- Configure NTP servers/system time.

#### Appliance Command Line

- Configure applicable network interfaces.
- Configure other settings as desired.

### Web Mode

#### Forcepoint Security Manager

- Enter subscription key, update Master Database, configure Network Agent, and configure policies in Forcepoint Security Manager.
- Requires Windows Server 2008 R2, or Windows Server 2012 or 2012 R2, or Windows Server 2016.

#### Content Gateway Manager (proxy)

- Configure user authentication and select protocols.

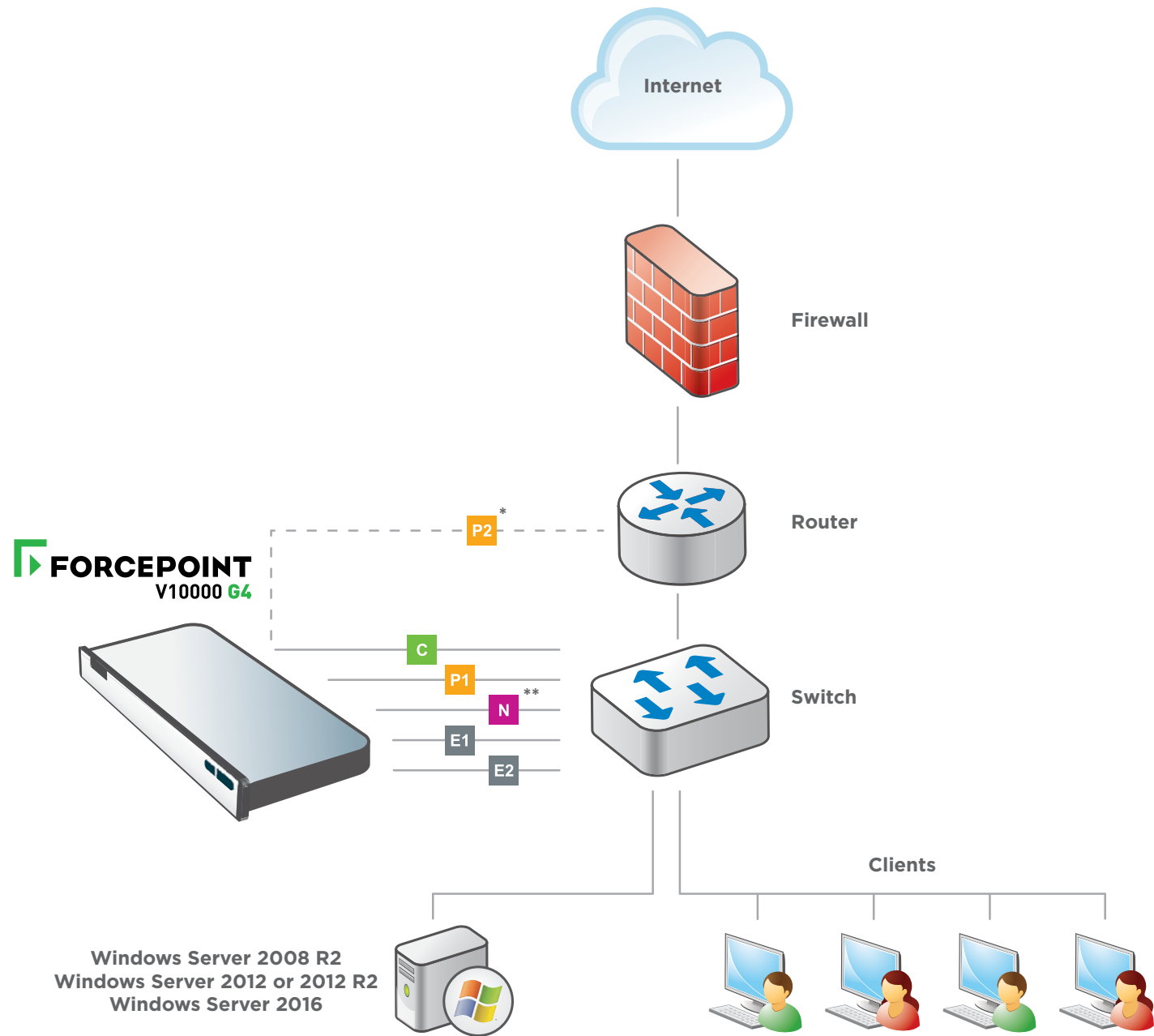
### Email Mode

#### Forcepoint Security Manager

- Complete configuration wizard, enter subscription key, and configure policies in the Email Security module. Configure email DLP policies in the Data Security module.
- Requires Windows Server 2008 R2, or Windows Server 2012 or 2012 R2, or Windows Server 2016.

# Appliance Deployment Overview

You can deploy one or more appliances on your network. The diagram below illustrates a basic appliance deployment. A separate computer with Windows Server is required for running Forcepoint Security Manager. See the **Forcepoint Appliances Getting Started** guide for details.



\* P2 is optional and may be connected to a router or switch.  
 \*\* Connect to bidirectional span, monitor, or mirror port if sending blocking information through N.

# Support & Resources

Getting Started Guide  
[support.forcepoint.com/documentation](http://support.forcepoint.com/documentation)

Online Support and Contact Information  
[support.forcepoint.com](http://support.forcepoint.com)

# Deployment Reference Sheet

## Appliance Information

C Interface IP:  Hostname:

**admin** is the default user name for the Appliance CLI, Forcepoint Security Manager, and Content Gateway Manager.

## Network Configuration

### Appliance Management Communication Interface (C)

IP Address:  Primary DNS:   
 Subnet Mask:  Secondary DNS:   
 Default Gateway:  Tertiary DNS:

### Content Gateway Interfaces (P1 & P2)

**P1**  
 IP Address:  Default Gateway:   
 Subnet Mask:  Primary DNS:   
**P2**  
 IP Address:  Secondary DNS:   
 Subnet Mask:  Tertiary DNS:

*Above settings apply to P1 and P2*

### Network Agent Interface (N)

IP Address:  Primary DNS:   
 Subnet Mask:  Secondary DNS:   
 Default Gateway:  Tertiary DNS:

### Forcepoint Email Security Interfaces (E1 & E2)

**E1**  
 IP Address:  Default Gateway:   
 Subnet Mask:  Primary DNS:   
**E2**  
 IP Address:  Secondary DNS:   
 Subnet Mask:  Tertiary DNS:

*Above settings apply to E1 and E2*

## Forcepoint Security Manager

<b>Web</b>	Policy Server IP: <input type="text"/>	<b>SQL Server</b>	IP Address: <input type="text"/>
	Log Server IP: <input type="text"/>		User Name: <input type="text"/>
	Subscription Key: <input type="text"/>		Password: <input type="text"/>
<b>Email</b>	Log Server IP: <input type="text"/>		
	Authentication Mode: <input type="text"/>		

See the **Forcepoint Appliances Getting Started** guide for details.